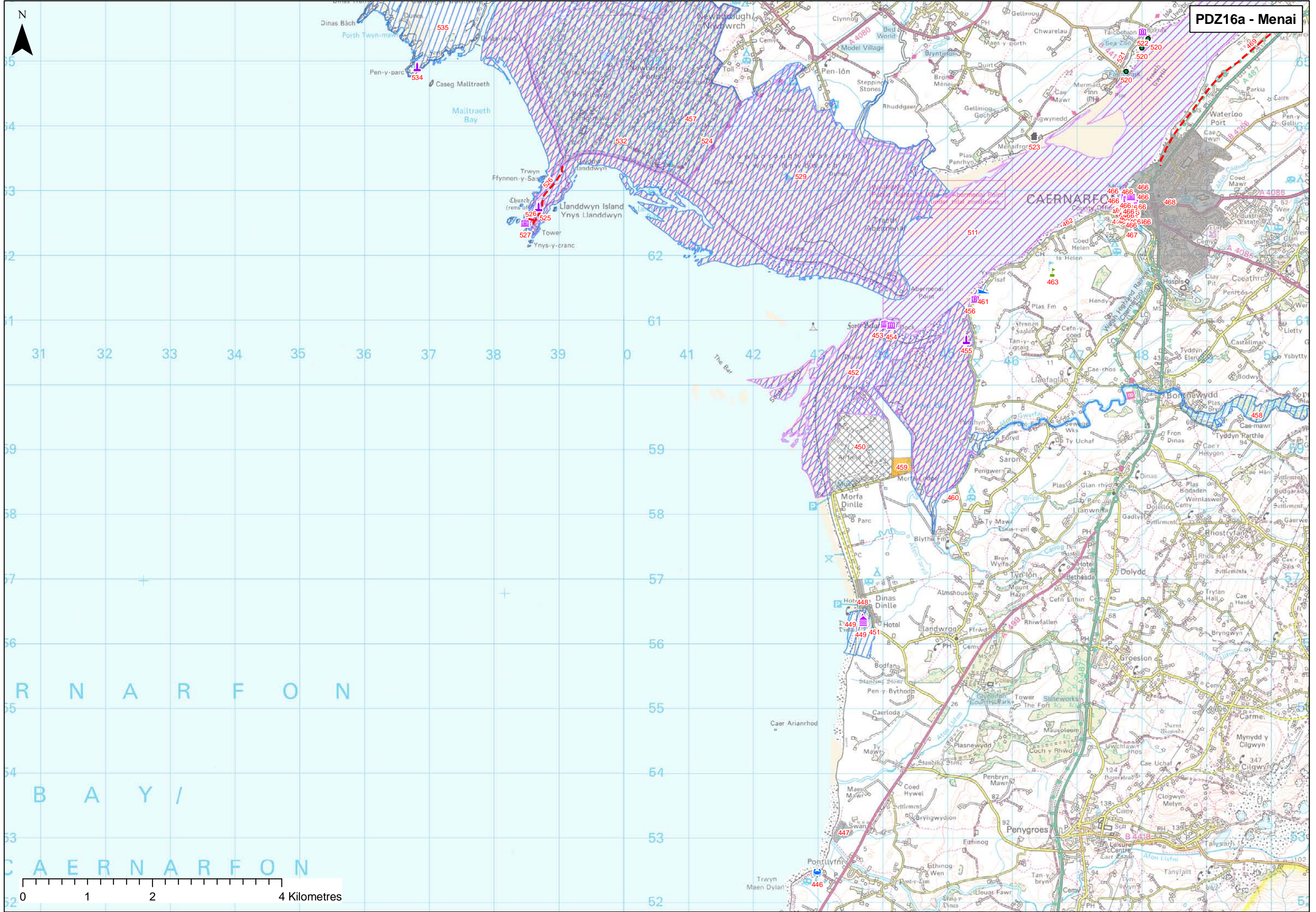


PDZ16a Menai - Trwyn Maen Dylan to Gerizim and Twyn y Parc to Penmon Point

ID		Location	Type	Feature	Issue associated with feature	FCD Issue	Affect Policy	Benefits/Why is issue important	Scale	Issue Type/ Theme	Who are the beneficiaries	Is Tis there enough of this benefit	Potential for substitution	Objectives
447	F282	Pontllyfni	Properties	Trout Farm	Low lying and close to the shore, may become flooded with SLR or be lost to coastal recession	Yes	Yes	Used for rainbow trout farming	Regional	C	Regional Community	No	Yes	Maintain function of trout farm
448	F283	Dinas Dinlle	Properties	Properties, coastal road	Seawater inundation of properties and there is concern about NT and LA owned sea defences. Beach levels have been improved following a storm in 1990, and movement has been controlled by two rock shore connected rock structures. This town is low lying howe	Yes	Yes	Dwellings and access road	Local	HA	Local Community	No	No	Maintian access and protect property
449	F284/E052	Dinas Dinlle	SAM	Scheduled Ancient Monument and SSSI	SAM Iron Age romano-british hillfort; WW2 pill box in the CRZ-erosion uncovering archaeology	Yes	Yes	Scheduled Monument (historical)	National	H	National Community	No	No	To prevent disturbance or deterioration to the site and it's setting and to prevent disturbance to or reduction of the area of the interest features, and ensure policy to enable adaptive response to sea level rise and erosion.
450	F285	Caernarfon Airfield	Airbase/Airport	Airfield	Located to the south of the Morfa Dinlle Dunes, subject to being at risk of erosion/ flooding with SLR	Yes	Yes	Airfield	Regional	HA	Regional Community	No	Yes	Maintain function of airfield
451	H096	Dinas Dinlle	Historical	Dinas Dinlle Camp, Promontory fort and seagull trench	Situated very close to the coast, may have some land loss with SLR/ coastal recession	Yes	Yes	Archaeological Importance	Local	H	Local Community	No	No	To prevent disturbance or deterioration to the structure and it's setting
452	F286/E053	Morfa Dinlle	SAC, SSSI	SSSI and Abermenai to Aberffraw Dunes SAC	SSSI loss on site- notable inverts on soft cliffs. Changes to natural processes	Yes	Yes	International and national nature conservation interest (ecology/habitat, dune geomorphology)	International and National	E	International and National Community	No	No	To maintain or enhance the condition or integrity of the international (SAC) and national (SSSI) designated sites and interest features within the context of a dynamic coastal system
453	F287	Morfa Dinlle	Listed Building	Fort Belan LB	Privately owned property, close to the shore located on the entrance to the menai straits	Yes	Yes	private dwelling, also holds archeological importance	National	H	National Community	No	No	To prevent disturbance or deterioration to the structure and it's setting
454	H097	Fort Belan	Listed Building	Cadw listed building Fort Beland and dock (including dockside buildings)	Situate on the tip of the Morfa Dinlle, if dynamics of the estuary are altered, it will affect this feature, its fairly low lying, so will be impacted by SLR	Yes	Yes	Listed Buildings	National	H	National Community	No	No	To prevent disturbance or deterioration to the structure and it's setting
455	H098	Afon Gwyrfa	SAM	Cored Gwyrfa Fish Weir SAM	situated on the mudflats of the river, will have issues with SLR	Yes	Yes	Scheduled Monument (historical)	National	H	National Community	No	No	To prevent disturbance or deterioration to the site and it's setting
456	H099	Menai Straits	Listed Building	Llanfaglan Lime Kiln Listed Building	ON the landward side of the coastal road, may have future issues as sea levels rise	Yes	Yes	Listed Buildings	National	H	National Community	No	No	To prevent disturbance or deterioration to the structure and it's setting
457	E054	Foryd Bay	SAC, SSSI	Menai Strait and Conwy Bay SAC, Y Foryd SSSI	Within the bay this designation lies on mudflats, likely to be impacted by SLR	Yes	Yes	International and national nature conservation interest (ecology/habitat)	International and National	E	International and National Community	No	No	To maintain or enhance the condition or integrity of the international (SAC) and national (SSSI) designated sites and interest features within the context of a dynamic coastal system
458	E055	Afon Gwyrfa	SSSI	Afon Gwyrfa a Llyn Cwellyn SSSI	Although not in the coastal zone, this river may suffer impacts as a result of water levels rising in the straits	Yes	Yes	National nature conservation interest (ecology/habitat)	National	E	National Community	No	No	To maintain or enhance the condition or integrity of the SSSI and interest features within the context of a dynamic coastal system
459	F288	Morfa Dinlle	Caravan/Holiday Park/Camp Site	Morfa Lodge and caravan site	Located seaward of the mudflats south of Afon Gwyrfa, at risk of flooding if river migrates levels rise	Yes	Yes	Tourism	Local	R	Local Community	No	Yes	Maintain function of caravan and camping
460	F289	Afon Gwyrfa	Properties	Properties	Low lying, on edge of river, at risk of loss due to flooding	Yes	Yes	Dwellings	Local	HA	Local Community	No	No	To prevent the loss of properties due to flooding
461	F290	Menai Straits	Boating / Shipyards	Small boat yard and car park	Located just above MHW mark, likley to have issues in future due to SLR	Yes	Yes	Storage for boats for recreational users	Local	HA	Local Community	No	Yes	Maintain boat storage and car park
462	F291	Menai Straits	Coastal Road	Coastal Road	Located just above MHW mark, likley to have issues in future due to SLR	Yes	Yes	Access road to Ynys Mon	Regional	HA	Regional Community	No	Yes	Maintain access
463	F292	Caernarfon	Golf Course	Golf Course	Low lying, at risk of flooding with future SLR	Yes	Yes	Recreation	Regional	R	Regional Community	No	Yes	Maintain golfing facilities
464	F293	Caernarfon	Footpath	Foot bridge	Low lying, at risk of being lost with SLR	Yes	Yes	Access to castle and town over the river	Local	HA	Local Community	No	Yes	Maintain access
465	F294	Caernarfon	Car Park	Car park	Located on a quay wall, may have issues in the future with SLR	Yes	Yes	Important for visitors to Castle and town	Regional	HA	Regional Community	No	Yes	Maintain parking facilities
466	H100	Caernarfon	Listed Building	Cadw listed buildings, Essential Settings, Castle and Town Walls	All historically important features, may suffer some flooding with SLR	Yes	Yes	Listed Buildings	National	H	National Community	No	No	To prevent disturbance or deterioration to the structure and it's setting
467	F295	Caernarfon	Harbour / Marina	Quay	On the southern side of the river, at risk of flooding if water levels rise	Yes	Yes	Recreation, popular boating area	Regional	R	Regional Community	No	Yes	Maintain function of quay
468	F296	Caernarfon	Properties	Properties	Residential properties on edge of menai straits, at risk in the future due to SLR	Yes	Yes	Dwellings	Local	HA	Local Community	No	No	Prevent loss of property due to SLR
523	F409	Menai Straits	Properties	Coastal farms and properties	Situated along th banks of the straits, likely to suffer loss of land/properties due to erosion or SLR	Yes	Yes	Agricultural land/ properties	Local	HA	Local Community	No	Yes	Prevent loss of properties and land due to SLR
524	F408	Traeth Abermenai	SSSI	SSSI	At risk of loss of some SSSI due to SLR. Changes to natural coastal processes essential for the integrity of the interest features	Yes	Yes	National nature conservation interest (habitat)	National	E	National Community	No	No	To maintain or enhance the condition or integrity of the SSSI and interest features within the context of a dynamic coastal system
525	H168	Llanddwyn Island	SAM	St Dwynwens Church SAM	situated in the centre of the island, acces to this SAM may deem a problem with SLR	Yes	Yes	Scheduled Monument (historical)	National	H	National Community	No	No	To prevent disturbance or deterioration to the site and it's setting
526	F407	Llanddwyn Island	Footpath	Footpath	Path at rsk of being lost when sea levels rise	Yes	Yes	Island is only accessible via footpath	Local	R	Local Community	No	No	Maintain access
527	H167	Llanddwyn Island	Listed Building	Former lighthouse keepers and pilots properties, lighthouse and tower LBs	Situated on the seaward edge of the island, these properties are likely to be lost with erosion of the cliffs and SLR	Yes	Yes	Listed Buildings	National	H	National Community	No	No	To prevent disturbance or deterioration to the structure and it's setting and to maintain access
528	F406	Anglesey coast dunes	cSAC SSSI	cSAC, SSSI	At risk of loss of some SSSI due to SLR. Changes to natural coastal processes essential for the integrity of the interest features	Yes	Yes	International and national nature conservation interest - One of the largest dune systems in Wales	International and National	E	International and National Community	No	No	To maintain or enhance the condition or integrity of the international (SAC) and national (SSSI) designated sites and interest features within the context of a dynamic coastal system
529	F405	Newborough Forest	SSSI	SSSI and NNR	At risk of loss of some SSSI due to SLR. Changes to natural coastal processes essential for the integrity of the interest features	Yes	Yes	National nature conservation interest (ecology / habitat and geology)	National	E	National Community	No	No	To maintain or enhance the condition or integrity of the SSSI and interest features within the context of a dynamic coastal system



R N A R F O N

B A Y /

C A E R N A R F O N

0 1 2 4 Kilometres