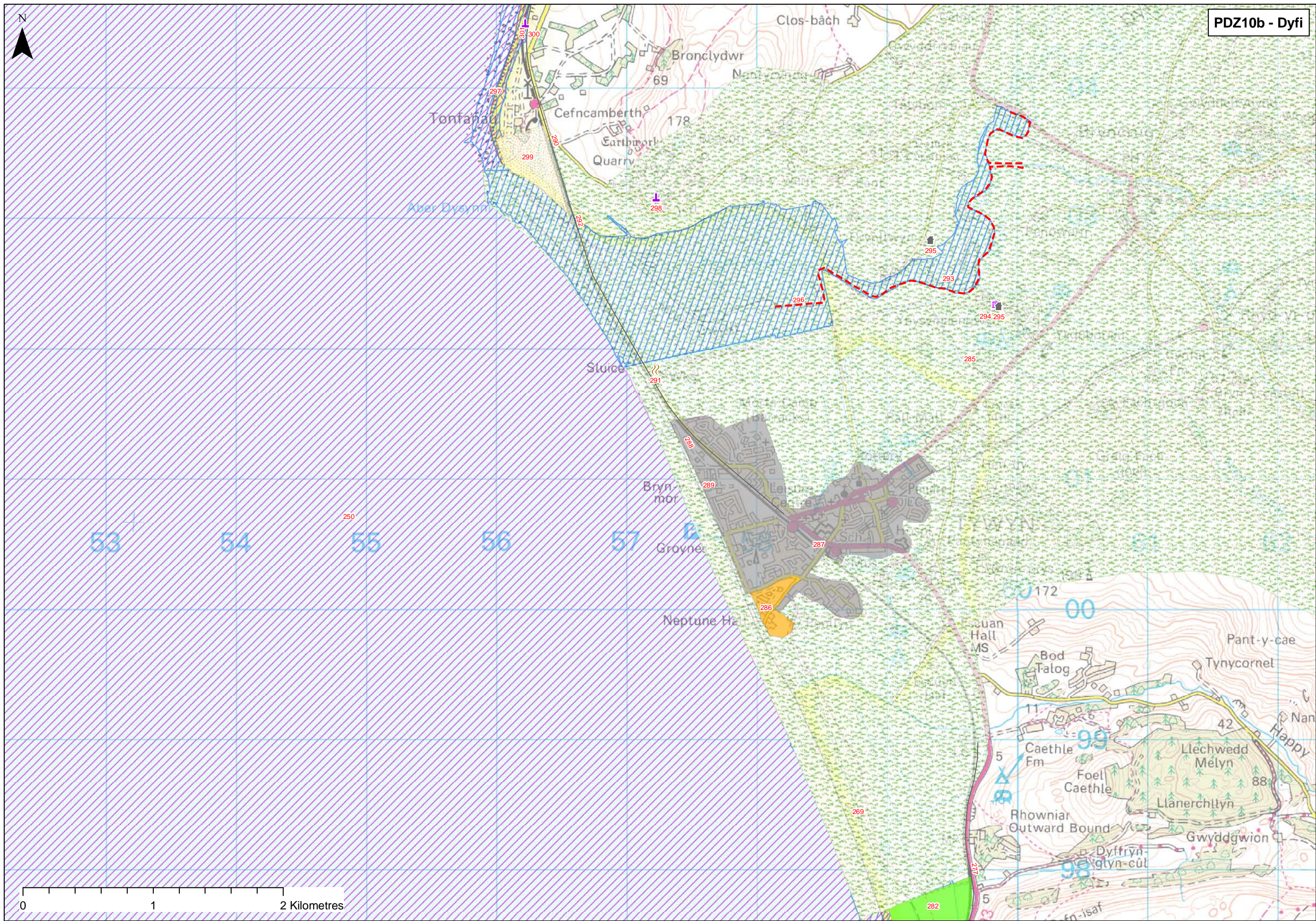


PDZ10b Dyfi - Sarn Gynfelyn to Ton Fanau

ID		Location	Type	Feature	Issue associated with feature	FCD Issue	Affect Policy	Benefits/Why is issue important	Scale	Issue Type/ Theme	Who are the beneficiaries	Is this enough of this benefit	Potential for substitution	Objectives
277	F156	Aberdyif	Railway	Railway line	Close to MHW mark in estuary, channel of river has potential to migrate, however may be a risk due to SLR	Yes	Yes	Main rail link to west wales	National	HA	National	No	No	Prevent loss of railway line
286	F162	Tywyn	Caravan/Holiday Park/Camp Site	Caravan Parks	Tywyn is low lying, coastal town, at risk of flooding/loss due to coastal recession	Yes	Yes	Plans are in place to protect Tywyn as its an important recreational/holiday destination for Gwynedd	Regional	R	Regional Community	No	No	Maintain function of caravan park
287	F163	Tywyn	Properties	Settlement	HWM over the last 100years has advanced by 3m. The prospect for beach levels at Tywyn is continued lowering with consequent threat to sea wall and groyne integrity unless there is significant onshore movement of beach material which is unlikely with present trends of low water mark regression.	Yes	Yes	Protected by sea wall and groynes along frontage of tywyn. Works due to commence this year to protect Tywyn involving beach nourishment, rock groynes and a headland breakwater	Regional	HA	Regional Community	No	No	Prevent loss of tywyn properties due to SLR
288	F164	Tywyn	Coastal Road	Coastal road	Is located on a protruding part of beach, protected by sea wall, in line with unprotected coastline, suggesting potential loss due to coastal recession without sea wall	Yes	Yes	Access/ through road	Regional	HA	Regional Community	No	No	Maintain access
289	F165	Tywyn	Properties	Properties to the north of sea wall	Properties here are unprotected by the sea wall and as such are at risk of loss due to coastal erosion	Yes	Yes	Dwellings	Local	HA	Local Community	No	No	Prevent loss of properties due to SLR and coastal erosion
290	F166	Tywyn	Railway	Railway line	Position is remarkably close to the shore, on a low shingle ridge protected with armour protection	Yes	Yes	Important transport link for west wales, shoreline reorientations have effectively starved both the Tywyn and British Rail defended frontages of beach material. As such, linear protection works are unsuitable and alternative approaches require consideration	National	HA	National Community	No	Yes	Prevent loss of railway line
291	F167	Tywyn	Sewage Works	Sewage works	Located behind the railway line and the coastal road, however at risk of loss due to recession	Yes	Yes	Sewage treatment for tywyn	Local	HA	Local Community	No	Yes	Prevent loss of sewage works
292	F168	Dysynni	Railway	Bridge and embankments	Low lying railway bridge, is spit breaches due to SLR, is likely to be lost	Yes	Yes	National Rail network	National	HA	National Community	No	Yes	Maintain railway line
293	F169/E027	Afon Dysynni	SSSI	Broadwater SSSI	Likely to be lost due to SLR. Changes to natural coastal processes essential for the integrity of the interest features	Yes	Yes	A wide variety of coastal habitats including a large tidal lagoon, saltmarsh, a shingle spit, mud flats and reedbeds. The river is also an important part of the site. The saltmarsh is dominated by sea rush (Juncus maritimus) but has a number of nationally	National	E	National Community	No	No	To maintain or enhance the condition or integrity of the SSSI and interest features within the context of a dynamic coastal system
294	H066	Tywyn	Listed Building	Ynysmaengwyn dovecote, Cadw listed buildings	Located on the floodplain of the Dysynni river, may have issues in the future with SLR	Yes	Yes	Listed Buildings	National	H	National Community	No	No	To prevent disturbance or deterioration to the structure and it's setting
295	F170	Afon Dysynni	Properties	Properties along dysynni river	Potential flooding/loss due to SLR	Yes	Yes	Dwellings, character of estuary	Local	HA	Local Community	No	Yes	Prevent loss of properties due to rise in water levels
296	F171	Afon Dysynni	Footpath	Footpath	Follows course of the dysynni, close to the river bank, likely flooding/loss will occur due to SLR	Yes	Yes	Continual footpath for recreation/access	Local	R	Local Community	No	Yes	Maintain public right of way
298	H067	Tal y Gareg	SAM	Llechrwyd Hillfort SAM	Situated close to the river may experience flooding with SLR	Yes	Yes	Scheduled Monument (historical)	National	H	National Community	No	No	To prevent disturbance or deterioration to the site and it's setting
299	F172	Tonfanau	Agriculture/Farming	Agricultural land	Eroding cliffs seaward of hinterland are protected by boulder beds on the upper foreshore, encouraging coarse sand and shingle to be driven onshore to form a strip beach against the cliff. Members of the Farmers Union Pembrokeshire, have voiced concern about the agricultural land suffering from flooding	Yes	Yes	If the promontory continues to erode there is little immediate threat regarding hinterland infrastructure. However, the receded promontory will increase erosion around the Dysynni outlet and the slate boulder breakwater may become outflanked	Local	C	Local Community	No	No	Prevent loss of agricultural land
300	F173	Tonfanau	SAM	Anti aircraft WW2 sites	At risk of being lost if cliffs continue to erode	Yes	Yes	Scheduled Monument (historical)	National	H	National Community	No	No	To prevent disturbance or deterioration to the site and it's setting
301	F174	Rhoslefain	Railway	Railway line and footpath	Very close to eroding shoreline, at great risk of loss due to coastal erosion	Yes	Yes	National transport links	National	HA	National Community	No	Yes	Maintain railway line and public right of way





0 1 2 Kilometres