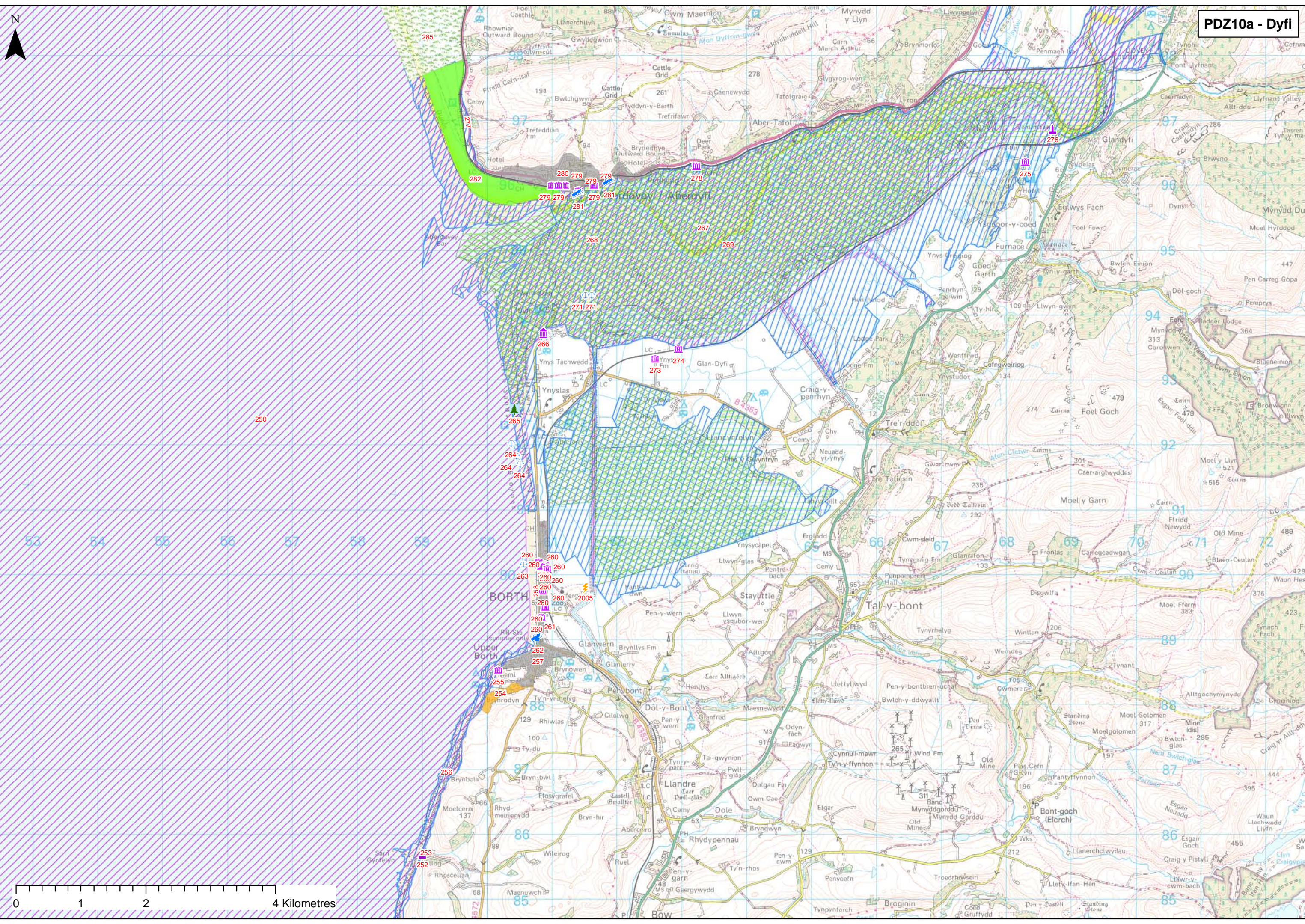


PDZ10a Dyfi - Sarn Gynfelyn to Ton Fanau

ID		Location	Type	Feature	Issue associated with feature	FCD Issue	Affect Policy	Benefits/Why is issue important	Scale	Issue Type/ Theme	Who are the beneficiaries	Is Tis there enough of this benefit	Potential for substitution	Objectives
254	F146	Upper Borth	Caravan/Holiday Park/Camp Site	Caravan Parks	Located on top of the cliffs south of Borth, unlikely to deem a problem due to SLR but possibly may be impacted by the recession of the cliffs	Yes	Yes	Holidaymakers, Borth is a popular recreational and tourism settlement	Regional	R	Regional Community	No	Yes	Maintain function of caravan park
255	H053	Upper Borth	Listed Building	Commemorative monument	War memorial is Cadw listed building, on a promontory over upper borth, close to cliff edge, may suffer with coastal erosion	Yes	Yes	Listed Buildings	National	H	National Community	No	No	To prevent disturbance or deterioration to the structure and it's setting
256	F147	Upper Borth	SSSI	SSSI	Risk of loss of habitat (terrestrial) with SLR/ coastal recession	Yes	Yes	National nature conservation interest (ecology/habitat)	National	E	National Community	No	No	To maintain or enhance the condition or integrity of the SSSI and interest features within the context of a dynamic coastal system
257	F148	Upper Borth	Properties	Properties	Close to cliff edge, may be at risk due to eroding of the cliffs	Yes	Yes	Protection of properties	Local	HA	Local Community	No	No	Prevent loss of property to SLR and erosion
258	F149	Borth	Coastal Road	Coastal road	Close to cliff edge, may be at risk due to eroding of the cliffs	Yes	Yes	access to large settlement of borth, through coastal road from aberyswyth	Regional	HA	Regional Community	No	No	Maintain access
259	F150	Borth	Properties	Coastal properties	Located behind wide sandy beach, protected by shingle bank and series of groynes. At risk of flooding/loss due to SLR	Yes	Yes	Fairly large settlement popular for holiday makers, potential to redevelop borth and increase use by proposed surfing reef and coastal defences	Regional	HA	Regional Community	No	No	Prevent loss of property to SLR and erosion
260	H054	Borth	Listed Building	Many listed buildings, chapel etc	Risk of loss with SLR and coastal erosion	Yes	Yes	Listed Buildings	National	H	National Community	No	No	To prevent disturbance or deterioration to the structure and it's setting
261	F151	Borth	Slipway and Access	Slipway	At risk of being lost due to coastal erosion	Yes	Yes	Provides access for recreational use across shingle bank and down onto beach	Local	R	Local Community	No	Yes	Maintain access to the beach for boating/recreation
262	F152	Borth	Lifeboat/ Lifeguard Station	RNLI station	At risk of being lost due to coastal erosion	Yes	Yes	Provides rescue for recreational users of the beach, will become more important once surfing reef encourages more visitors to area	Regional	HA	Regional Community	No	Yes	Prevent loss of lifeboat station
262		Borth	Railway	Railway Station and Railway Line	At risk of becoming damaged/ lost due to coastal flooding	Yes	Yes	Transport link, main railway line and station for Borth	Regional	HA	Regional Community	No	No	Maintain function of railway line and station for the community of Borth
263	H055	Borth	Protected Wreck	Wreck Visible at Low tide	Risk of loss with SLR and coastal erosion	Yes	Yes	Protected Wrecks	Regional	H	Regional Community	No	No	To prevent deterioration or disturbance to historic wrecks
264	H056	Borth	Protected Wreck	three wrecks visible at low tide	Risk of loss with SLR and coastal erosion	Yes	Yes	Protected Wrecks	Regional	H	Regional Community	No	No	To prevent deterioration or disturbance to historic wrecks
265	H057	Borth Sands	Submerged Forest	Submerged forest	Risk of loss with SLR and coastal erosion	Yes	Yes	Archaeological and Geomorphological Importance	Local	H	Local Community	No	No	To prevent disturbance or deterioration to the structure and it's setting
266	H058	Twyni Mawr	Historical	Anti landing obstacle	WW2 significance, Risk of loss with SLR and coastal erosion	Yes	Yes	Archaeological Importance	Local	H	Local Community	No	No	To prevent disturbance or deterioration to the structure and it's setting
267	F153/E023	Dyfi	National Nature Reserve	National Nature reserve	risk of loss due to flooding/SLR	Yes	Yes	National nature conservation interest	National	E	National Community	No	No	To maintain the conservation, amenity and education and research benefits of the NNR
268	E024	Cors Fochno and Dyfi	Ramsar	Ramsar	risk of loss of habitat with SLR/ coastal recession	Yes	Yes	National nature conservation interest	National	E	National Community	No	No	To maintain or enhance the condition or integrity of the site and interest features within the context of a dynamic coastal system
269	F154/E025	Dyfi Estuary	SAC and SSSI	SSSI (Dyfi) and SAC (Lleyn Peninsular and the Sarnau) and GCR	Risk of loss of habitat with SLR/ coastal recession. Changes to natural coastal processes essential for the integrity of the interest features (e.g. erosion)	Yes	Yes	International and national nature conservation interest - Coastal processes, spit formation, quaternary sediments, submerged forest and over 30 biological features	International and National	E	International and National Community	No	No	To maintain or enhance the condition or integrity of the international (SAC) and national (SSSI) designated sites and interest features within the context of a dynamic coastal system
270	F156	Aberdyfi	Railway	Railway line	Close to MHW mark in estuary, channel of river has potential to migrate, however may be a risk due to SLR	Yes	Yes	Main rail link to west wales	National	HA	National Community	No	No	Prevent loss of railway line
271	H059	Afon Leri	Protected Wreck	remains of two wrecks within the mudflats	Risk of loss with SLR and coastal erosion	Yes	Yes	Protected Wrecks	Regional	H	Regional Community	No	No	To prevent deterioration or disturbance to historic wrecks
272	F157	Dyfi Estuary	SAC and SSSI	SSSI (Dyfi) and SAC (Lleyn Peninsular and the Sarnau) and GCR	Risk of loss of habitat with SLR/ coastal recession. Changes to natural coastal processes essential for the integrity of the interest features (e.g. erosion)	Yes	Yes	International and national nature conservation interest - Coastal processes, spit formation, quaternary sediments, submerged forest and over 30 biological features	International and National	E	International and National Community	No	No	To maintain or enhance the condition or integrity of the international (SAC) and national (SSSI) designated sites and interest features within the context of a dynamic coastal system
273	H060	Dyfi Valley	Listed Building	Listed buildings, dwellings	Risk of loss with SLR and coastal erosion	Yes	Yes	Listed Buildings	National	H	National Community	No	No	To prevent disturbance or deterioration to the structure and it's setting
274	H061	Dyfi Valley	Listed Building	Military listed buildings	Risk of loss with SLR and coastal erosion	Yes	Yes	Listed Buildings	National	H	National Community	No	No	To prevent disturbance or deterioration to the structure and it's setting
275	H062	Dyfi Valley	Listed Building	18th century farmstead/dwellings	Risk of loss with SLR and coastal erosion	Yes	Yes	Listed Buildings	National	H	National Community	No	No	To prevent disturbance or deterioration to the structure and it's setting
276	H062a	Dyfi Valley	SAM	Domen Las SAM	on the edge of the dyfi river, may be lost with SLR	Yes	Yes	Scheduled Monument (historical)	National	H	National Community	No	No	To prevent disturbance or deterioration to the site and it's setting
278	H063	Dyfi Estuary	Listed Building	Trefri Hall Cadw Listed Building	Located on a small rocky outcrop in the river, may experience flooding issues with SLR	Yes	Yes	Listed Buildings	National	H	National Community	No	No	To prevent disturbance or deterioration to the structure and it's setting
279	H064	Aberdyfi	Listed Building	Many cadw listed buildings	Situated on the landward side of the coastal road, may have flooding issues in the future	Yes	Yes	Listed Buildings	National	H	National Community	No	No	To prevent disturbance or deterioration to the structure and it's setting
280	F158	Aberdyfi	Properties	Residences and properties	Close to edge of river, could suffer loss due to SLR or migration of the channel.	Yes	Yes	Popular area for recreation, outward bound centre, holiday village, hotels, museum	Regional	HA	Regional Community	No	No	Prevent loss of properties due to SLR/erosion
281	F159	Aberdyfi	Slipway and Access	Slipways, footpaths and jetties	Close to edge of river, could suffer loss due to SLR or migration of the channel. If channel migrates south, could increase width of mudflats in front of Aberdyfi and there fore create issues for access	Yes	Yes	Access issues	Regional	R	Regional Community	No	No	Maintain use of slipways and access to beach for boating/recreation
282	F160	Aberdyfi	Golf Course	Sand Dunes/ Golf Course	Restoration has occurred recently to the dunes with sand from the southern side of the estuary, area requires intervention	Yes	Yes	Popular area for golfing/recreation	Regional	R	Regional Community	No	No	Maintain sand dunes for recreational and environmental purposes
283	E026	Dyfi Estuary	SPA, SAC, Ramsar and SSSI	Dyfi Estuary SPA, Cors Fochno and Dyfi Ramsar, Lleyn Peninsular SAC and Dyfi SSSI	Risk of loss of habitat due to SLR. Changes to natural coastal processes essential for the integrity of the interest features (e.g. erosion)	Yes	Yes	International and national nature conservation interest for its ecology / habitat including bogs, marshes, water fringed vegetation, fens, sandflats and mudflats. SPA feature - greenland white-fronted goose. Geologically important providing a detailed rec	International and national	E	International and National Community	No	No	To maintain or enhance the condition or integrity of the international (SPA, Ramsar, SAC) and national (SSSI) designated sites and interest features within the context of a dynamic coastal system



0 1 2 4 Kilometres

PDZ10a Dyfi - Sarn Gynfelyn to Ton Fanau

ID		Location	Type	Feature	Issue associated with feature	FCD Issue	Affect Policy	Benefits/Why is issue important	Scale	Issue Type/ Theme	Who are the beneficiaries	Is there enough of this benefit	Potential for substitution	Objectives
284	F161	Aberdyfi	SSSI	Sand dunes/SSSI	Risk of loss of habitat due to SLR. Changes to natural coastal processes essential for the integrity of the interest features (e.g. erosion)	Yes	Yes	Afon Dyfi estuary, a major estuary within Cardigan Bay, and is of international importance. It is a major feature of the cSAC	National	E	National Community	No	No	To maintain or enhance the condition or integrity of the SSSI and interest features within the context of a dynamic coastal system
285	H065	Tywyn	Historic Parks and Gardens	South of Tywyn, Landscape of Special Historic Interest	This area covers land just south of Rhowniar to the dysynni river, extends coastwards, may suffer loss with coastal recession and SLR	Yes	Yes	Historic Parks and Gardens	National	H	National Community	No	No	To prevent disturbance to the interest feature and character
2005		Borth	Issue without Objective	Landfill site	Landfill site, may need removing/ protecting with SLR	Yes	Yes	Potential contaminated land, risk of exposure with erosion and SLR	Local	I	Local Community	No	Yes	Protect or remove landfill site if it is a risk to coastal erosion

