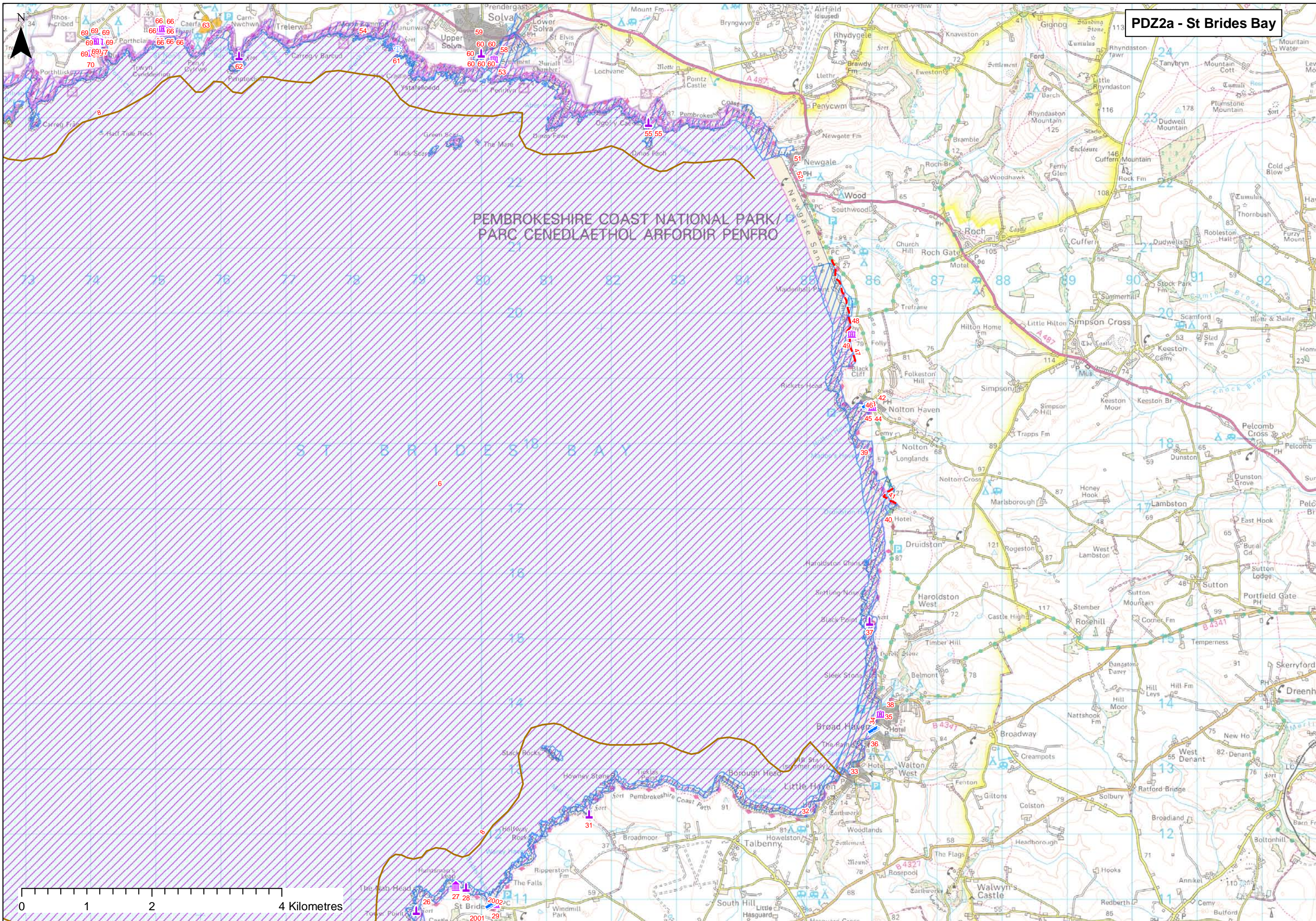


PDZ2 St Brides Bay - Borough Head to Cwm Bach

ID		Location	Type	Feature	Issue associated with feature	FCD Issue	Affect Policy	Benefits/Why is issue important	Scale	Issue Type/ Theme	Who are the beneficiaries	Is this enough of this benefit	Potential for substitution	Objectives
8	E003	Pembrokeshire Coast	Heritage Coast	Heritage Coast	Majority of the Pembs coastline is heritage coast	Yes	Yes	Heritage Coast	National	E	National Community	No	No	To maintain or enhance the condition or integrity of the site and interest features within the context of a dynamic coastal system
26	H018a	Tower Point	SAM	Tower Point Rath SAM	May experience loss of land due to erosion	Yes	Yes	Scheduled Monument (historical)	National	H	National Community	No	No	To prevent disturbance or deterioration to the site and its setting
27	H019	Huntsmans Leap	Historical	WW2 air gunnery and bombing range lookout tower, now destroyed	Loss due to SLR/coastal recession	Yes	Yes	Archaeological Importance	Local	H	Local Community	No	No	To prevent disturbance or deterioration to the site and its setting
28	H019a	Castle Head	SAM	Castle Head defended enclosure SAM	Situated on the shore, this is likely to be lost to SLR	Yes	Yes	Scheduled Monument (historical)	National	H	National Community	No	No	To prevent disturbance or deterioration to the site and its setting
29	H020	St Brides	Listed Building	Small village with many archaeological and historic features, including a church, burial grounds, chapel and tower and listed buildings	Lime Kiln Cadw Listed building	Yes	Yes	Listed Buildings	National	H	National Community	No	No	To prevent disturbance or deterioration to the structure and its setting.
30	F004	St Brides Community	SAC, SSSI	SAC and SSSI	Changes to natural coastal processes (e.g. erosion, deposition, transport) essential for the integrity of the interest features	Yes	Yes	International and national nature conservation interest (geology, vegetation, invertebrates, grey seals)	International and National	E	International and National Community	No	No	To maintain or enhance the condition or integrity of the international (SAC) and national (SSSI) designated sites and interest features within the context of a dynamic coastal system
31	H021	Mill Haven	SAM	Small sculpture, Lime Kiln Cadw LB and Mill Haven Rath SAM	Series of modern sculptures along coastal path, made from natural materials	Yes	Yes	Scheduled Monument (historical)	National	H	National Community	No	No	To prevent disturbance or deterioration to the site and its setting
32	F005	Howelston	Coastal Road	Coastal Road	Falling cliff seaward of coastal road into Little Haven, caravan park at risk	Yes	Yes	Only main access road to caravan park, cliffs are SSSI and SACs	Local	HA	Local	No	Yes	Maintain access along coastline and the ability to have access to and use of the village and the beach
33	F006	Little Haven	Properties	Residential Properties, Pub and Car Park	Potential loss due to shoreline recession, at risk of tidal flooding and loss due to SLR	Yes	Yes	The village is heavily dependent on tourism, thus a loss of assets would economically impact the village. Main access into village, properties potentially lost due to erosion and SLR	Regional	HA	Regional Community	No	No	Maintain the character of Little Haven and maintain a sustainable community
34	F007	Broad Haven	Coastal Road	Coastal Road	At risk of loss due to erosion	Yes	Yes	Main coastal road connecting Little and Broad haven, very close to edge of cliff, at risk due to erosion of cliff	Regional	HA	Regional Community	No	Yes	Maintain access to broad haven and coastal villages
35	F008	Broad Haven	Properties	Properties	At risk of loss due to erosion and sea level rise	Yes	Yes	The village extends to the beach front, and properties are under threat, Sea defences at present do not dissipate wave energy effectively. Village dependent on tourism	Local	HA	Local Community	No	Yes	To prevent loss of properties due to erosion and flooding
36	F009	Broad Haven	Slipway and Access	Slipway	Loss due to SLR/coastal recession	Yes	Yes	Slipway provides access for recreation, watersports, which in turn is important for tourism	Regional	R	Region	No	Yes	Maintain access to beach for boating/recreation
37	H022	Broad Haven	SAM	Hillfort, Black Point Rath SAM	Located on cliff, has slumped 5m due to landslide	Yes	Yes	Scheduled Monument (historical)	National	H	National Community	No	No	To prevent disturbance or deterioration to the site and its setting
38	H022a	Broad Haven	Listed Building	Broad Haven House Cadw LB	LB facing the beach, behind the coastal road, at risk of flooding, like the rest of sea facing properties	Yes	Yes	Listed Buildings	National	H	National Community	No	No	To prevent disturbance or deterioration to the structure and its setting.
39	E004	Aberbach-Newgale to Little Haven Coast	SSSI	SSSI	Loss due to SLR/coastal recession and changes to natural coastal processes (e.g. erosion and deposition) essential for the integrity of the interest features	Yes	Yes	National nature conservation interest (geology, vegetation, invertebrates, grey seals)	National	E	National Community	No	No	To maintain or enhance the condition or integrity of the SSSI and interest features within the context of a dynamic coastal system
40	H023	Drudston Haven	Properties	Properties and Druidston Haven Hotel	Small stone summer house located on hillside, at risk of loss due to cliff erosion	Yes	Yes	Residential Property	Local	HA	Local Community	No	No	Prevent loss of properties due to cliff erosion
41	F010	Druidstone Haven	Footpath	Coastal Footpath	Integrity of footpath access to beach is at risk due to erosion	Yes	Yes	Pembrokeshire coastal footpath important for access and recreation	Regional	R	Regional Community	No	Yes	Maintain the use of the pembrokeshire coastal footpath, as it is vital for tourism and as part of the character of the area
42	H023a	Nolton Haven	Listed Building	Nolton Haven Chapel Cadw LB	On a hillside however may experience some flooding in the future	Yes	Yes	Listed Buildings	National	H	National Community	No	No	To prevent disturbance or deterioration to the structure and its setting.
43	F011	Nolton Haven	Properties	Properties	Potential loss of housing due to shoreline recession	Yes	Yes	The land use is predominantly recreational and amenity, although there are houses lying within the hinterland.	Local	HA	Local Community	No	No	To prevent loss of properties to erosion
44	F012	Nolton Haven	Listed Building	Nolton Chapel	Listed building at risk of loss due to SLR	Yes	Yes	Listed Buildings	National	H	National Community	No	No	To prevent disturbance or deterioration to the structure and its setting.
45	F013	Nolton Haven	Slipway and Access	Slipway	Loss of risk due to SLR, access via slipway may deem a problem for recreational use of beach	Yes	Yes	Nolton relies on recreation and amenity for tourists and residents, A slipway provides access to beach for recreational use	Regional		Regional Community	No	Yes	Maintain access to beach for boating/recreation
46	F014	Nolton Haven	Car Park	Road and Car Park	At risk of erosion, loss due to SLR	Yes	Yes	Access road to town, coastal road, skirts very close to the beach	Regional	HA	Regional Community	No	Yes	Maintain the access to Nolton haven and properties
47	F015	Broad Haven to Newgale	Footpath	Coastal Path	Lies close to cliff edge in places, as risk of loss due to erosion	Yes	Yes	Continual coastal path for Pembrokeshire for recreation	National	R	Regional Community	No	Yes	Maintain the use of the pembrokeshire coastal footpath, as it is vital for tourism and as part of the character of the area
48	F016	Newgale	Properties	Cottages situated on a cliff to the south of the beach	Potentially threatened by erosion of cliff	Yes	Yes	Residential Properties, Listed building	Local	HA	Local Community	No	No	Prevent loss of properties due to cliff erosion
49	H024	Newgale Sands	Listed Building	Coillery remains, Lime Kiln Cadw LB	Listed building at risk of loss due to SLR	Yes	Yes	Listed Buildings	National	H	National Community	No	No	To prevent disturbance or deterioration to the structure and its setting.
50	F017	Nolton Haven to Newgale	SSSI	SSSI	Changes to natural coastal processes (e.g. erosion, deposition, transport) essential for the integrity of the interest features	Yes	Yes	National nature conservation interest (geology)	National	E	National Community	No	No	To maintain or enhance the condition or integrity of the SSSI and interest features within the context of a dynamic coastal system
51	F018	Newgale Sands	Properties	Residential and commercial properties and caravan parks	Human development has hindered the natural evolution of the natural shingle storm beach	Yes	Yes	Long broad sandy bay which is very popular for tourists. Development has damaged the natural storm defences of a shingle ridge. Properties experience flooding and are at risk due to coastal recession and SLR	Regional	HA	Regional Community	No	No	Prevent damage to/ loss of residential and commercial properties due to coastal erosion
52	F019	Newgale Sands	Coastal Road	Coastal road and car park	Road very much at risk of being lost as a result of erosion	Yes	Yes	Infrastructure and amenities are most threatened towards the north of the unit where the shingle embankment encroaches close to the main road and built assets.	Regional	HA	Regional Community	No	Yes	Maintain the ability to have access to and use of the village and the beach



PDZ2 St Brides Bay - Borough Head to Cwm Bach

ID		Location	Type	Feature	Issue associated with feature	FCD Issue	Affect Policy	Benefits/Why is issue important	Scale	Issue Type/ Theme	Who are the beneficiaries	Is there enough of this benefit	Potential for substitution	Objectives
53	F020	Newgale Sands	SSSI	SSSI	Important environmental areas of interest at risk of loss due to recession. Changes to natural coastal processes (e.g. erosion and deposition) essential for the integrity of the interest features	Yes	Yes	Environmentally sensitive wide sandy foreshore one of most important in Pembrokeshire. Two areas identified as submerged forests at north end of beach. National Nature conservation interest (geology)	National	E	National Community	No	No	To maintain or enhance the condition or integrity of the SSSI and interest features within the context of a dynamic coastal system
54	F021/E005	Newgale to Solva	SPA,SAC, SSSI	SSSI (St Davids Peninsular) and SPA (Ramsay and St Davids Peninsular Coast) and SAC (St Davids and Pembrokeshire Marine SAC)	Loss of habitats and potential loss of designated relict landforms due to recession and/or changes to natural coastal processes (e.g. erosion and deposition) essential for the integrity of the interest features	Yes	Yes	Majority of land owned by National trust, International and national nature conservation interest - Geologically varied coastline and seabed topography in combination with the extreme range of exposure to wave and tidal energy give rise to exceptionally h	International and National	E	International and National Community	No	No	To maintain or enhance the condition or integrity of the international (SPA,SAC) and national (SSSI) designated sites and interest features within the context of a dynamic coastal system
2001	F004a	St Brides	Slipway and Access	Slipway	Loss if Sea levels Rise and prevent access for boats	Yes	Yes	Important for access for boats. Popular diving spot for Skokholm island, especially when Little Haven car park is full	Local	R	Local Community	No	Yes	To maintain boating and recreation access
2002	F004b	St Brides	Beach	Small Sea wall	Masonry wall is causing reflection of waves during high tides and rough conditions, increasing the problem of flooding and overtopping	Yes	Yes	Creating further issues	Local	I	Local Community	No	Yes	To maintain the safe use of bay

